



**FEATURES**

- DUAL PORT LINE INTERFACE MODULES FOR ESTATE SENSITIVE T1, E1, PRI ISDN AND CEPR APPLICATIONS.
- ISOLATION VOLTAGE:1500Vrms
- RECOGNIZED BY UL 1950.

**TEST CONDITIONS**

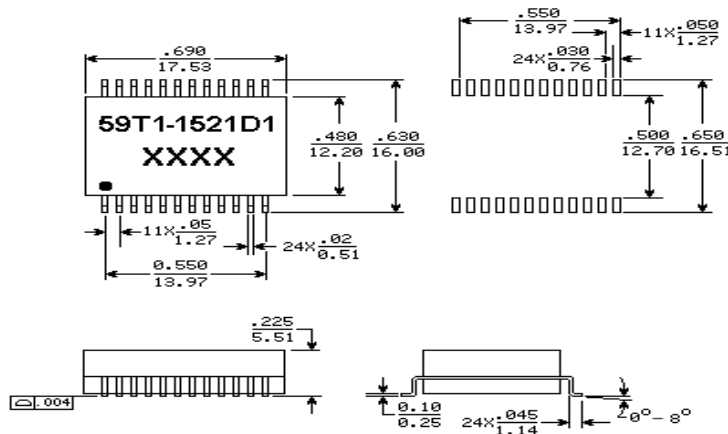
- Inductance ----- 10KHz/20mV
- Leakage Inductance ----- 100KHz/1V
- Interwinding Capacitance - 100KHz/1V



**ELECTRICAL SPECIFICATIONS @25°C-Operating temperature -40°C TO 85°C**

PART NUMBER	TURNS RATIO ±5%		OCL mH MIN	LL uH MAX	Cw/w pF MAX	PRI DCR (Ω MAX)	PRIMARY PINS	
	TX	RX					TX	RX
59T1-152AD1	1CT : 2CT	1CT : 2CT	1.5	0.5	35	0.8	4-6,10-12	1-3,7-9
59T1-152BD1	1CT : 2.42CT	1CT : 2.42CT	1.5	0.5	35	0.8	4-6,10-12	1-3,7-9
59T1-152CD1	1CT : 1.36CT	1CT : 1.36CT	1.5	0.5	35	0.8	4-6,10-12	24-22,18-16
59T1-152DD1	1CT : 2CT	1CT : 2CT	1.5	0.5	35	0.8	1-3,10-12	21-19,18-16
59T1-152ED1	1CT : 1.36CT	1CT : 2CT	1.5	0.5	35	0.8	4-6,10-12	24-22,18-16
59T1-152FD1	1CT : 1.36CT	1CT : 1CT	1.5	0.5	35	0.8	4-6,10-12	24-22,18-16
59T1-152GD1	1CT : 1.14CT	1CT : 1.14CT	1.5	0.5	35	0.8	4-6,10-12	24-22,18-16
59T1-152HD1	1CT : 1.15CT	1CT : 1.15CT	1.5	0.5	35	0.8	4-6,10-12	1-3,7-9
59T1-152ID1	1CT : 1.14CT	1CT : 1.14CT	1.5	0.5	35	0.8	1-3,10-12	21-19,18-16
59T1-152JD1	1CT : 1.15CT	1CT : 2CT	1.5	0.5	35	0.8	4-6,10-12	24-22,18-16
59T1-152KD1	1CT : 1.15CT	1CT : 2CT	1.5	0.5	35	0.8	4-6,10-12	1-3,7-9
59T1-152LD1	1CT : 2.3CT	1CT : 1CT	1.5	0.5	35	0.8	4-6,10-12	24-22,18-16
59T1-152MD1	1CT : 2CT	1CT : 1CT	1.5	0.5	35	0.8	4-6,10-12	24-22,18-16
59T1-152ND1	1CT : 2.45CT	1CT : 2.45CT	1.5	0.5	35	0.8	4-6,10-12	24-22,18-16
59T1-152OD1	1CT : 2.4CT	1CT : 1CT	1.5	0.5	35	0.8	1-3,10-12	21-19,18-16

**MARKINGS AND DIMENSIONS**

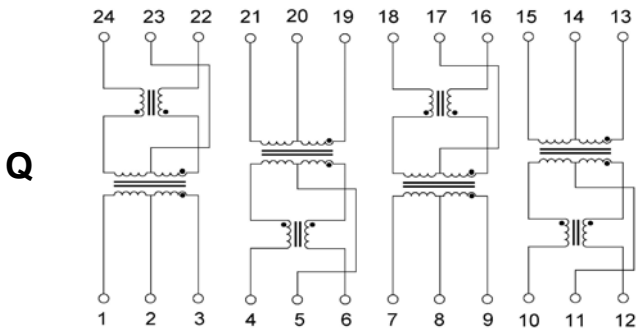
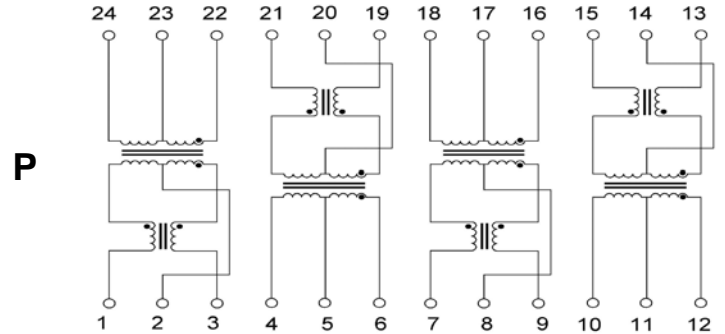
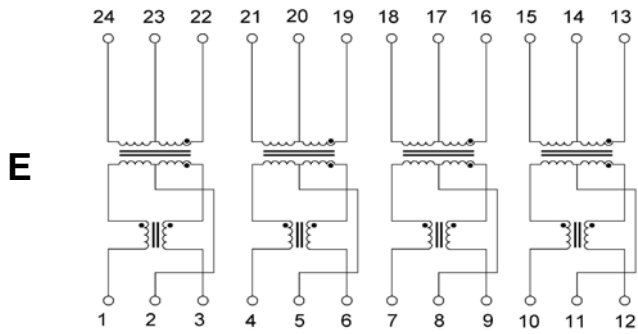
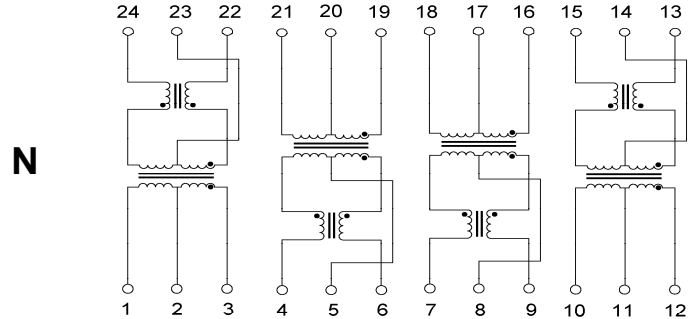
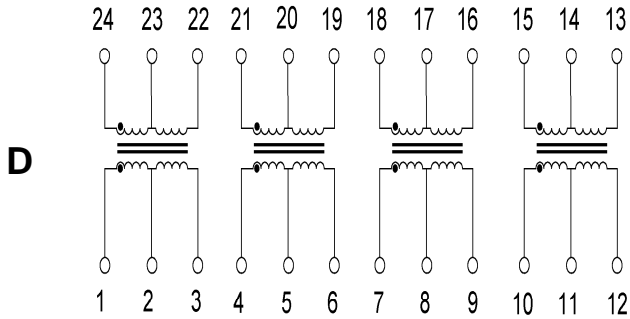


Dimensions:inches/mm

Unless otherwise specified, all tolerances are ±.010/±0.25



**SCHEMATICS**



**Part Number:**

59T1 - 152 D D 1NL

A B C D E

A:Series

B:Inductance

C:Turns Ratio

D:Schematic

E:RoHS Version